

# THE WEEKLY MO'OLELO

Wednesday, July 1, 2026



Keep up with the latest news from across Navy Region Hawaii. Click on any story to read the full version online. Some networks do not allow access to embedded links. For those readers, right click the PDF and open in your internet browser.

## Upcoming Events

- **Drinking Water Info Booth:** July 14 at JBPHH Newcomers Fair, JBPHH Memorial Chapel, 1600 Frederick St., from 1-1:30 p.m.\* Base access required
- **4th of July Celebration:** July 4 at Joint Base Pearl Harbor-Hickam. Gates open at 4 p.m. Fireworks start at 9:20 p.m. \* DoW ID or base access required



## Thousands Attend Open Ship Day at JBPHH

Thousands of visitors descended on Joint Base Pearl Harbor-Hickam on Saturday for Open Ship Day. The popular event, held in conjunction with Exercise Rim of Pacific (RIMPAC) 2026, provided an opportunity for U.S. military ID holders, RIMPAC partner nation participants, and members of the public to tour active-duty international and domestic naval vessels docked in Pearl Harbor. Japan Maritime Self-Defense Force Kongō-class guided-missile destroyer JS Kongō (DDG 173) was among the ships hosting tours.



## RIMPAC Sailors Join Community Cleanups

U.S. Navy Sailors assigned to the USS Theodore Roosevelt Carrier Strike Group and Carrier Air Wing 11 took part in community cleanups last week at Leahi State Monument Park, Ahua Reef Wetland and Mokuleia Army Beach. The Sailors, who are in Hawaii for Exercise Rim of Pacific (RIMPAC) 2026, joined other volunteers from the community to clear trash, debris and invasive weeds from the Oahu sites. RIMPAC is the world's premier international maritime exercise.



## Sea Turtle Hatchlings Get Helping Hand from PMRF

Personnel from Pacific Missile Range Facility (PMRF) Barking Sands and the state Dept. of Land and Natural Resources' Aquatic Resources Division helped 40 green sea turtle hatchlings make their way to the ocean last week. The hatchlings had a difficult time digging out of their nest and needed an assist. Natural resources team members carefully excavated the site by hand, collected the live hatchlings and set them free to make their trek to the ocean.



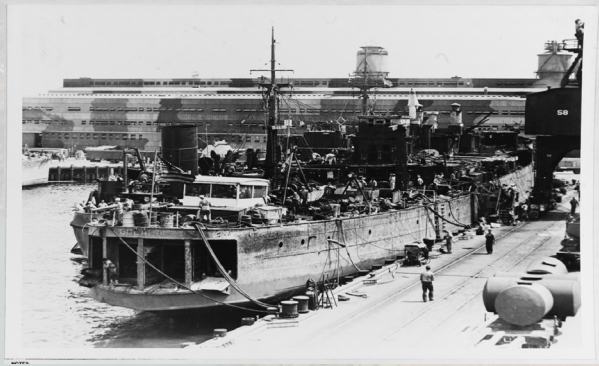
## Dry Dock 5 Construction Update

Construction continues on Dry Dock 5, the U.S. Navy's largest military construction project at Pearl Harbor Naval Shipyard. Recent progress includes installation of dewatering struts, completion of precast pile driving at the East Substation, ongoing land reclamation activities, the start of pump well tension pile installation, the beginning of North Cofferdam pile installation, continued construction of the fire water pump house, and installation of 893 of 1,305 crane rail piles.



## PMRF Strengthens Local Law Enforcement Partnership

Capt. Robert Prince, commanding officer of Pacific Missile Range Facility (PMRF) Barking Sands, hosted an installation tour and mission brief last week for Kauai's new police chief, Rudy Tai, and his staff. The group discussed mutual aid coordination, joint emergency response events and how collaborative efforts have been instrumental to managing resources for the county. By collaborating in joint force protection scenarios, the Navy and county police can enhance mutual aid agreements and emergency response efforts.



## This Week in History July 3, 1942

After months of complex salvage work, on July 3, 1942, the USS Oglala (CM-4), flagship of the Pacific Fleet Mine Force, entered drydock. The minelayer capsized during the Pearl Harbor attack, and many believed she would never fight again. Photo: USS Oglala at Pearl Harbor Naval Shipyard following her salvage. Oglala left Pearl Harbor in December 1942 and was placed in full commission again in February 1944 to serve throughout the remainder of the war.



Laulima Navy underscores our responsibility to the community and the ways we work alongside partners to help and support our neighbors. Service to others and a commitment to the greater good are values we hold in high regard. It is a privilege for all of us to call Hawaii home and we seek every opportunity we can to show how much we treasure this place. Scan the QR code to learn more about Laulima Navy.



FOR ACCESS TO NEWS, VIDEOS, AND PHOTOS FROM NAVY REGION HAWAII AND OTHER SERVICES, VISIT DEFENSE VISUAL INFORMATION DISTRIBUTION SERVICE (DVIDS), THE CNRH WEBSITE, OR FOLLOW US ON SOCIAL MEDIA.



/NavyRegionHawaii/  
/JBPHH  
/PacificMissileRangeFacility



Commander-navy-region-hawaii



/C-NRH /JBPHH  
/PMRF /NCTF-RH



/jointbasephh



/JointBasePHH  
/NavRegHawaii



cnrh.cnic.navy.mil/  
navyclosuretaskforce.navy.mil/